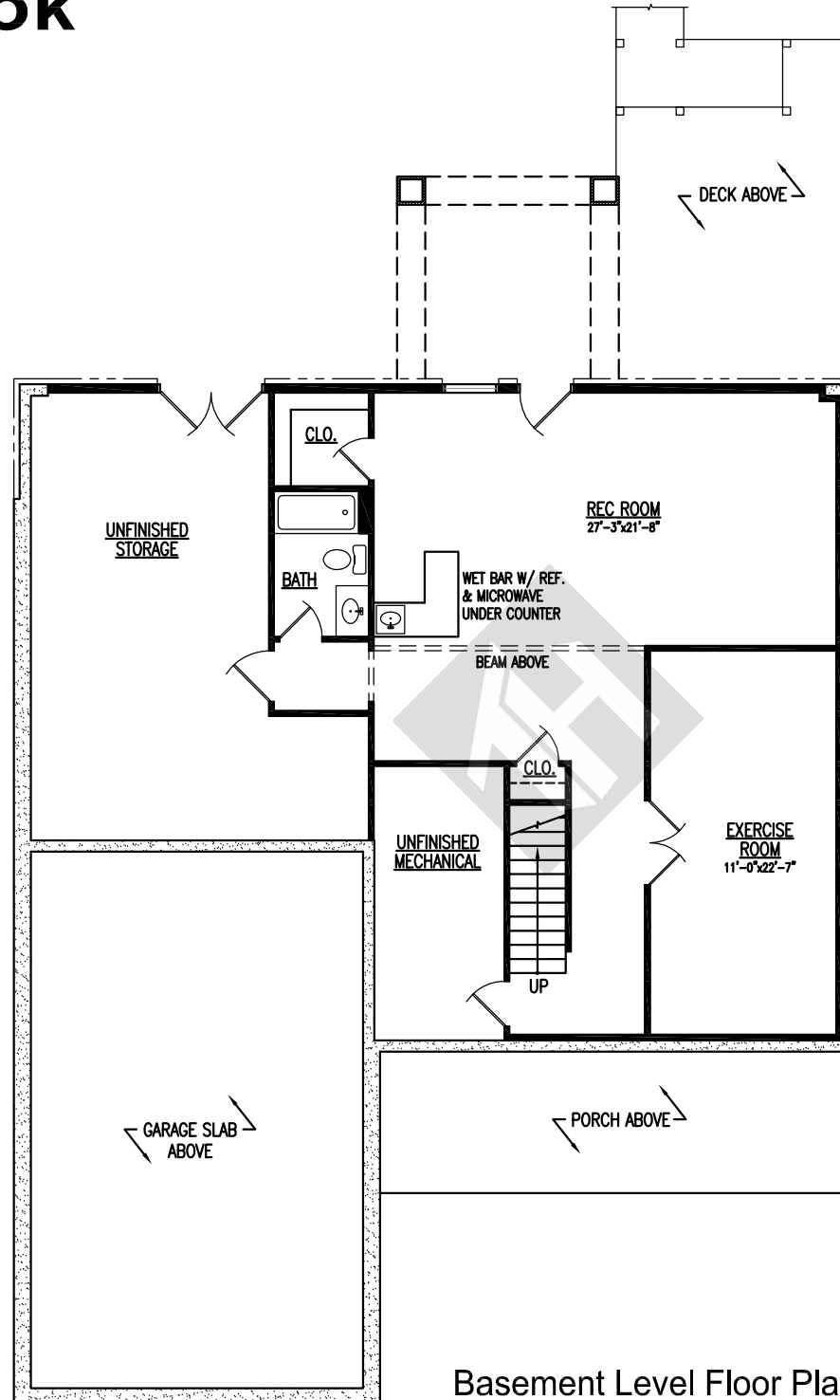


The Hollybrook

Finished Basement Area	1064 SF
Main Level Area	1844 SF
Upper Level Area	741 SF
Total Living Area	3649 SF

Garage Area 672 SF



Basement Level Floor Plan

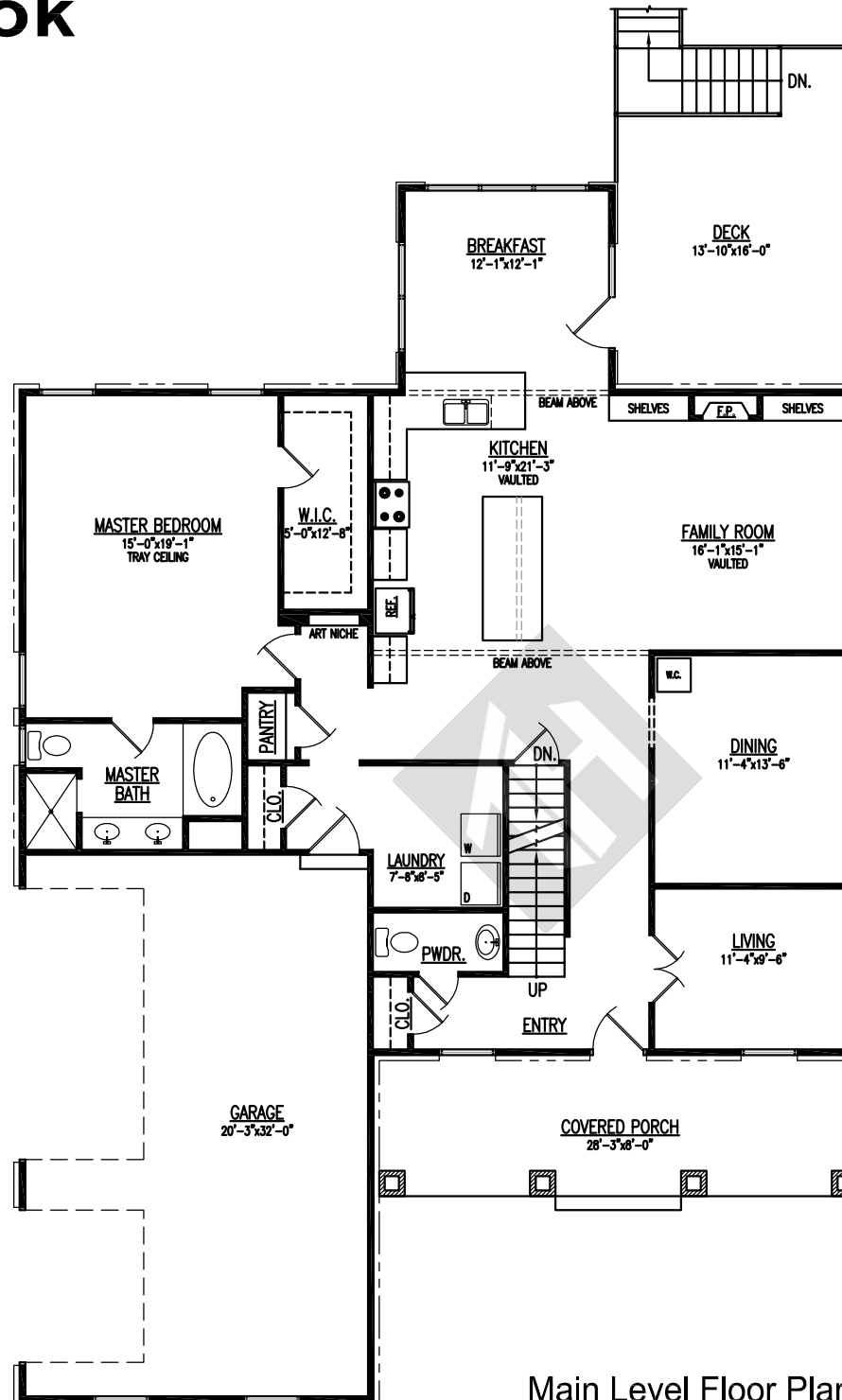


The Hollybrook

Finished Basement Area 1064 SF
Main Level Area 1844 SF
Upper Level Area 741 SF

Total Living Area 3649 SF

Garage Area 672 SF



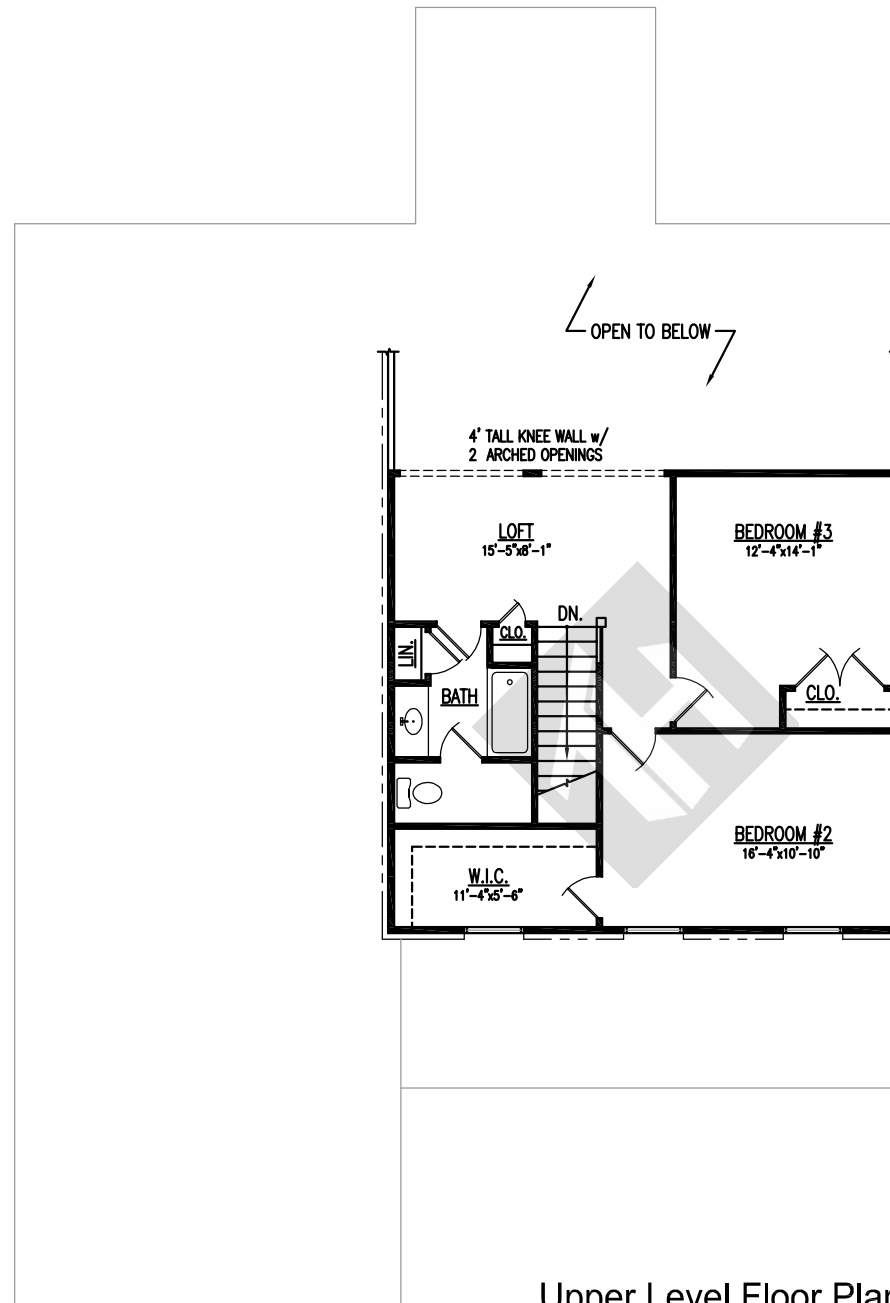
Main Level Floor Plan



The Hollybrook

Finished Basement Area	1064 SF
Main Level Area	1844 SF
Upper Level Area	741 SF
<hr/> Total Living Area	<hr/> 3649 SF

Garage Area 672 SF



Upper Level Floor Plan



The Hollybrook

Finished Basement Area 1064 SF
Main Level Area 1844 SF
Upper Level Area 741 SF

Total Living Area 3649 SF

Garage Area 672 SF



Front Elevation

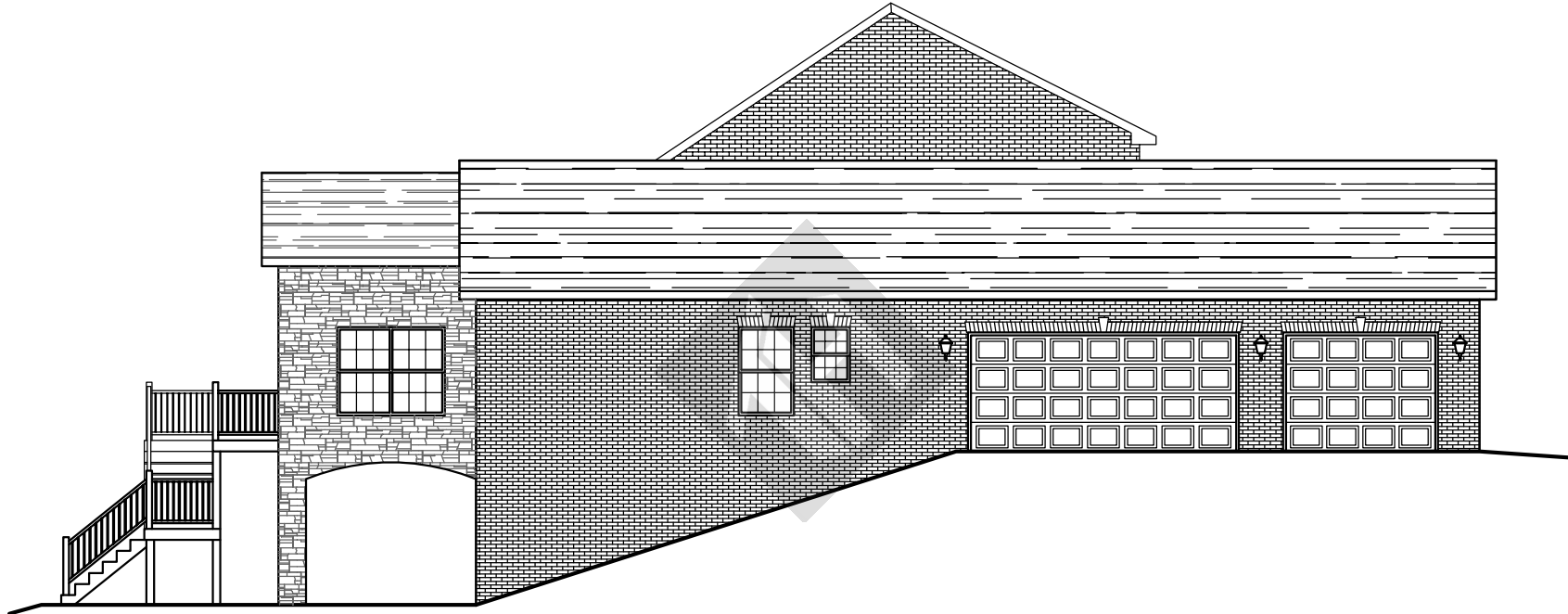


www.tyrishomes.com | 540.641.2828

The Hollybrook

Finished Basement Area 1064 SF
Main Level Area 1844 SF
Upper Level Area 741 SF
Total Living Area 3649 SF

Garage Area 672 SF



Left Elevation



www.tyrishomes.com | 540.641.2828

The Hollybrook

Finished Basement Area 1064 SF
Main Level Area 1844 SF
Upper Level Area 741 SF
Total Living Area 3649 SF

Garage Area 672 SF



Rear Elevation

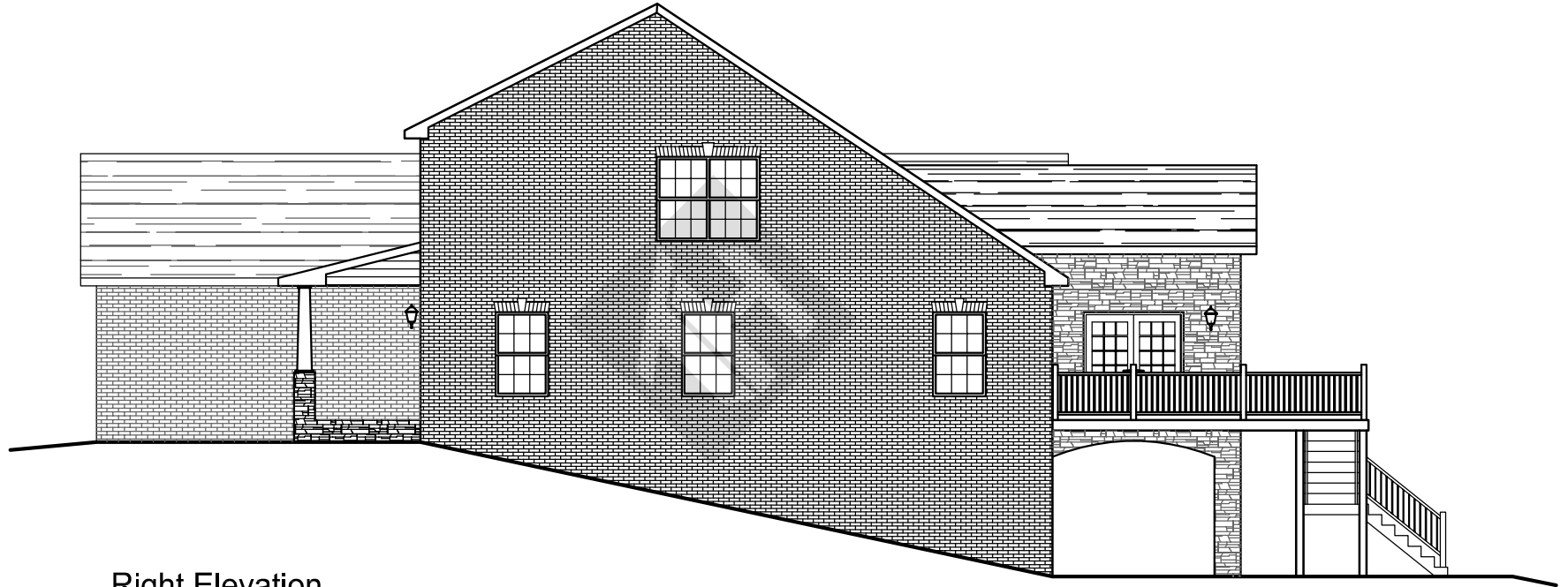


www.tyrishomes.com | 540.641.2828

The Hollybrook

Finished Basement Area 1064 SF
Main Level Area 1844 SF
Upper Level Area 741 SF
Total Living Area 3649 SF

Garage Area 672 SF



Right Elevation



www.tyrishomes.com | 540.641.2828